



Rhino Clear **Sprint** Atomizer

Topical Sinus Therapy

Instruction Book

- ▶ Lightweight, portable atomizer for medicated topical sinus therapy or nasal rinse.

Steps for Using Rhino Clear Sprint Atomizer

Step 1: Remove the clear plastic lid (Separator) of the Rhino Clear Sprint.

Step 2: Pour contents of one mixing cup (see page 4) or oral syringe (see page 5) of medication into the atomization chamber, making sure the white atomizer piece is in place.*

Step 3: Place the clear plastic lid back on the atomizer chamber. Then attach the blue rubber nasal adaptor on top of the lid.

Step 4: Place the blue tip of the nasal adaptor inside one nostril.

Step 5: Start the atomizer by holding down the green button and breathing in gently (as if you are smelling a flower). Release the button while breathing out.

Step 6: Repeat Step 3 for the other nostril. Switch back and forth while atomizing, dividing medication evenly between both nostrils. Atomize each nostril for approximately 10 seconds at a time.

Step 7: Clean your atomizer with warm water.
DO NOT PUT ATOMIZER PARTS IN BOILING WATER.

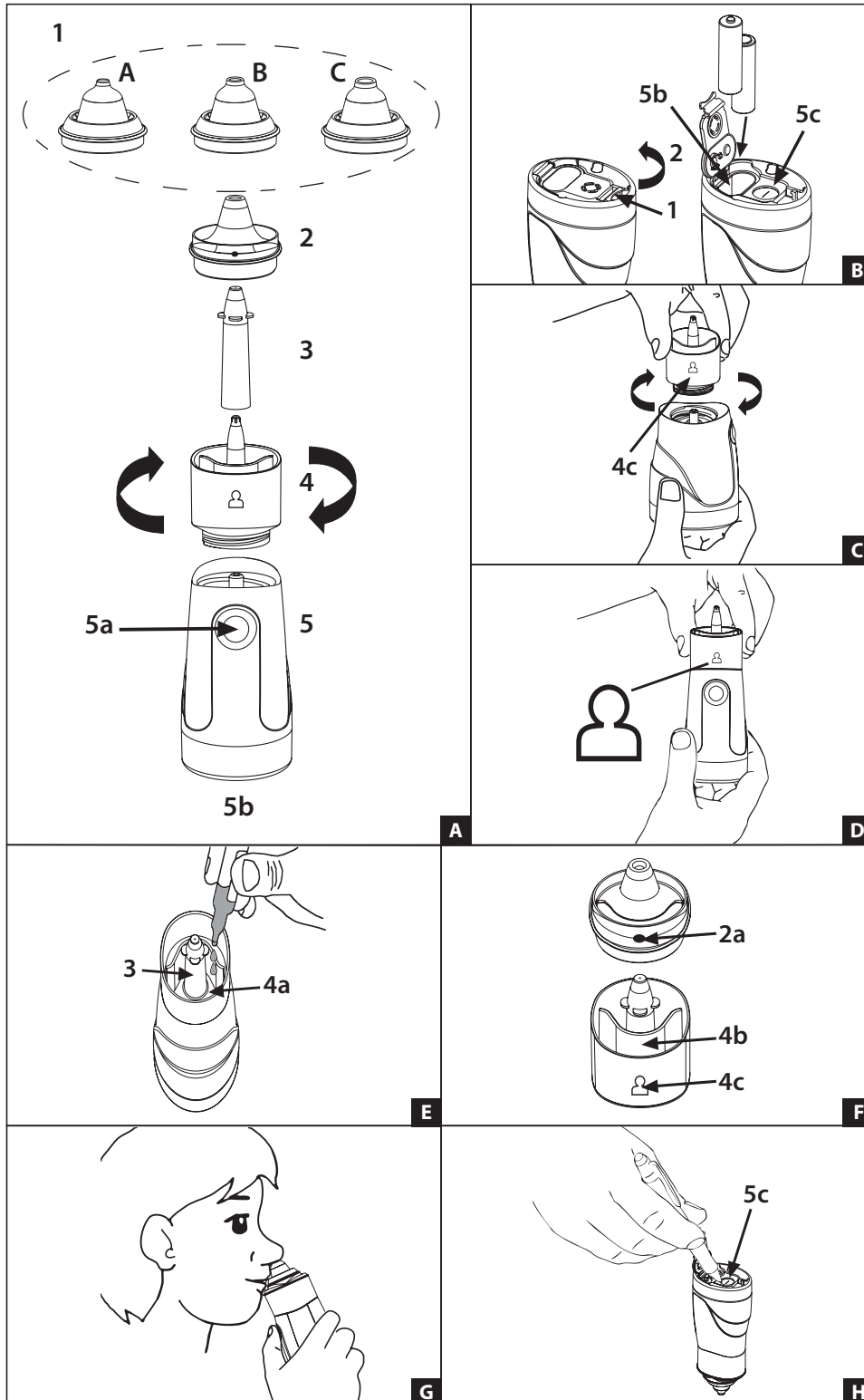
***Note:** If you have more than one medication, you may be able to mix them, but please call our pharmacy toll-free 855-876-3060 to confirm.



Rhino Clear Sprint - Parts



See page 3 for description of parts in this diagram.



Outline of Rhino Clear Sprint Parts

- (1) Nasal adaptor 'A' with a soft rubber tip, suitable for children up to 3 years of age
Nasal adaptor 'B' with a soft rubber tip, suitable for children from 3 to 10 years of age
Nasal adaptor 'C' with a soft rubber tip, suitable for 10 years of age and over
- (2) Separator
- (3) Atomizer
- (4) Removable and washable flask consisting of 2 separate chambers
 - (4a) 15 mL nebulization chamber
 - (4b) Retrieval chamber
- (5) Compressor body with ergonomic handle
 - (5a) Activation button
 - (5b) Battery compartment
 - (5c) Aspiration valve with lid



Capsule Mixing Instructions

Please call Woodland Hills Pharmacy at (855) 876-3060 for verbal consultation or if you have any questions.

Wash your hands with soap and water, and dry hands thoroughly before using medication.



Pull the capsule apart over the mixing cup



Pour the contents of the mixing cup into the atomization chamber.

Step 1: Make saline according to manufacturer's direction.

Step 2: Mixing your medication in the mixing cup:

1. Remove the cap from the included 1 oz (30mL) mixing cup.
2. Fill the mixing cup up to the 15mL line with saline.
3. Take one capsule of medication and gently pull the capsule apart over the mixing cup. Gently roll the capsule pieces between your fingers while pouring the contents into the mixing cup. Discard remaining capsule shell.
4. Replace and tighten the cap of the mixing cup. Shake gently to mix medication.

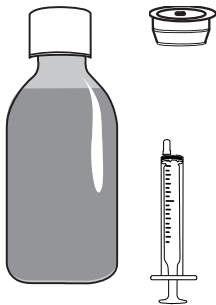
Step 3: Using your atomizer device:

1. Remove the cap of the mixing cup and the clear plastic lid (Separator) of the Rhino Clear Sprint. Pour the contents of the mixing cup into the atomization chamber (chamber with the white atomizer piece) of the Rhino Clear Sprint.
2. Replace the clear plastic lid and make sure the atomizer is in place.

Step 4: You are now ready to atomize your medications. Please refer to your medication label for directions.

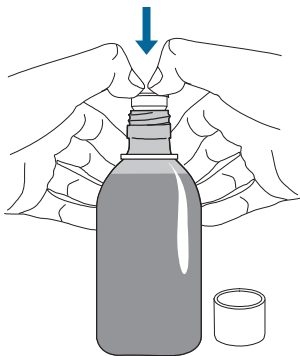
Instructions for Using the Oral Syringe and Medication Bottle

Read these instructions carefully before taking the medicine. This will help you to use the oral dosing syringe correctly. Please call Woodland Hills Pharmacy at (855) 876-3060 for verbal consultation or if you have any questions.



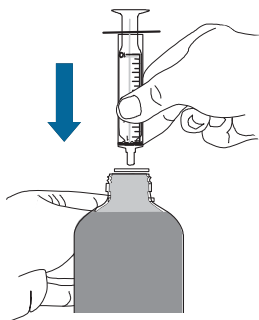
What you will be using:

- A **press-in bottle adapter** that you insert into the neck of the bottle. Once you have inserted the adapter, do not remove it.
- A **bottle containing the medicine** that has a child-resistant screw cap and safety seal. Don't forget to remove the safety seal before inserting the bottle adapter. Always screw the cap back on after use.
- An **oral dosing syringe** that consists of a clear plastic tube with a plunger inside. The oral syringe fits into the bottle adapter and is used to measure out the required amount of medicine from the bottle. Use a new bottle adapter and oral dosing syringe each time you start a new bottle of medicine.



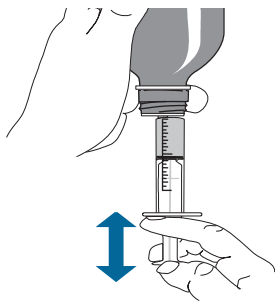
Step 1: Fitting the press-in bottle adapter into a new bottle of medicine

1. Remove the cap from the bottle by pushing down firmly and turning it counter-clockwise (as shown on the top of the cap).
2. Holding the open bottle upright on a table, push the bottle adapter firmly into the neck of the bottle as far as it will go.
Note: You may not be able to push the bottle adapter down fully but this does not matter as it will be forced into the bottle when you screw the cap back on.
3. Screw the cap back on the bottle.



Step 2: Preparing a dose of medicine

1. Remove the cap from the bottle by pushing it down firmly and turning it counter-clockwise (as shown on the top of the cap).
2. Check that the plunger is pushed fully into the oral syringe.
3. Keeping the bottle upright, insert the oral syringe firmly into the bottle adapter by gently twisting as you push down.



4. Holding the oral syringe in place, carefully turn the bottle and oral syringe upside down.

5. Before you measure your dose you need to get rid of any large bubbles that may be trapped in the oral syringe. To do this, slowly pull the plunger back so that the oral syringe fills with medicine. Then, push the plunger all the way back in so that it is empty again.

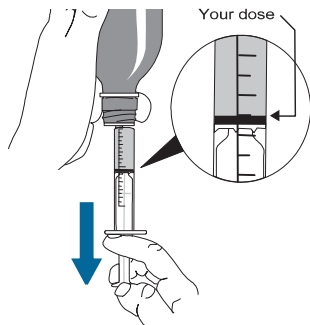
Step 3: Measuring a dose of medicine

1. Find the marker on the oral syringe that corresponds to the required amount of medicine.

2. Slowly pull the plunger out until the top edge of the black ring inside is exactly level with the marker.

3. Carefully turn the bottle and oral syringe back upright.

4. Remove the oral syringe from the bottle adapter by gently twisting as you pull out.

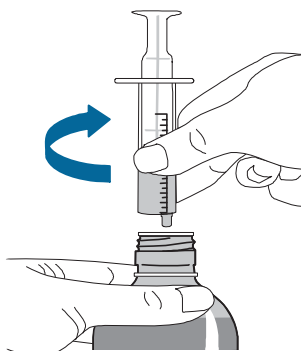


Step 4: Using your atomizer device

1. Remove the clear plastic lid (Separator) of the Rhino Clear Sprint. Slowly push out the medication from the oral syringe into the atomization chamber (chamber with the white atomizer piece) of the Rhino Clear Sprint.

2. Replace the clear plastic lid and make sure the atomizer is in place.

3. You are now ready to atomize your medications. Please refer to your medication label for directions.



Slowly push out the medication into the atomization chamber